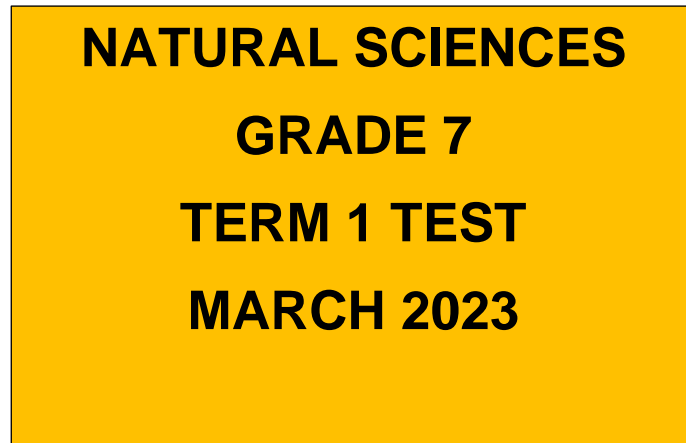


SEKHUKHUNE SOUTH DISTRICT



1. This question paper consists of TEN (10) pages including the cover.
2. Read the questions carefully before attempting to answer them.
3. Write your answers on the spaces provided.
4. Answer all the questions on this question paper.
5. Write neatly and legibly.

Name of learner: _____

SECTION A**QUESTION 1**

Various options are provided as possible answers to the following questions. Choose the correct answer by circling it.

- 1.1. The component of the biosphere related with the soil is_____
- A. Lithosphere
 - B. Hydrosphere
 - C. Atmosphere
 - D. Ecosphere
- 1.2. The five-kingdom classification system used by scientists include:
- A. Animalia; Plantae; Fungi; Viruses; Bacteria
 - B. Animalia; Plantae; Fungi; Monera; Carnivore
 - C. Animalia; Plantae; Fungi; Protista; Bacteria
 - D. Animalia; Plantae; Fungi; Protista; Monera
- 1.3. Which reproductive structures are produced by flowering plants?
- A. Sori
 - B. Seeds
 - C. Sperms
 - D. Spores
- 1.4. _____ are animals that can survive both on land and in water.
- A. Amphibians
 - B. Reptiles
 - C. Mollusca
 - D. Arthropods
- 1.5. _____ is the stage where males and females reach sexual maturity.
- A. Puberty
 - B. Egg cell
 - C. DNA
 - D. Sperm
- 1.6. Which of the following does NOT describe the term biodiversity:

1.6. Which of the following does NOT describe the term biodiversity:

- A. The variety of living things on Earth.
 - B. The place where plants and animals live.
 - C. Both A and B are correct.
 - D. None of the above.
- 1.7. Which of the following is an example of an amphibian?
- A. Frog
 - B. Spider
 - C. Bird
 - D. Locust
- 1.8. The _____ is the male part of the reproductive the flower which produces pollen.
- A. Sepals
 - B. Stamen
 - C. Anther
 - D. Petals
- 1.9. Pregnancy in humans takes about _____
- A. 20 weeks
 - B. 30 weeks
 - C. 40 weeks
 - D. 60 weeks
- 1.10. Which of the following is a requirement for all living things to survive?
- A. Gases, soil
 - B. Water, favourable conditions
 - C. Decomposers
 - D. Both A and B are correct

(10x1=10)

QUESTION 2

State whether the following statements are true or false.

- 2.1. Variations in humans cannot be inherited. _____
- 2.2. Sexually Transmitted Diseases are passed from one person to the other during sex. _____
- 2.3. Fish are warm-blooded animals. _____

2.4. Ovule is the male part of the flower. _____

2.5. Menstruation occurs in males. _____

(5x1=5)

QUESTION 3

Match the definitions in Column A with the word in Column B. Write the letter from Column B as your answer in Column C

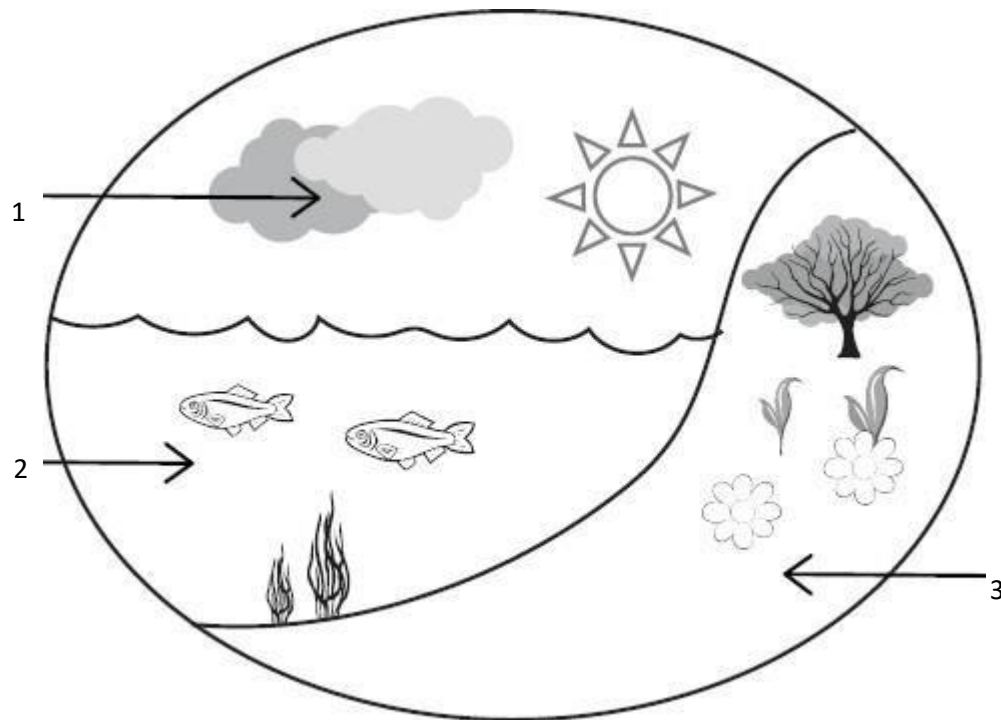
Column A	Column B	Column C
2.1. The transfer of pollen between plants of the same species for the purpose of fertilization.	A. Fertilisation	
2.2. A group of living things of the same type that can reproduce to make more individuals.	B. Gymnosperm	
2.3. The fusion of the egg and sperm cell.	C. Species D.	
2.4. The spread of seeds over a wide area.	E. Pollination	
2.5. The group of plants that produce naked seeds	F. Dispersal	
	G. Respiration	

(5x1=5)

SECTION B

QUESTION 4 (The Biosphere)

The following diagram represents the components of the biosphere. Study the diagram carefully.



4.1. Define the term biosphere. (1)

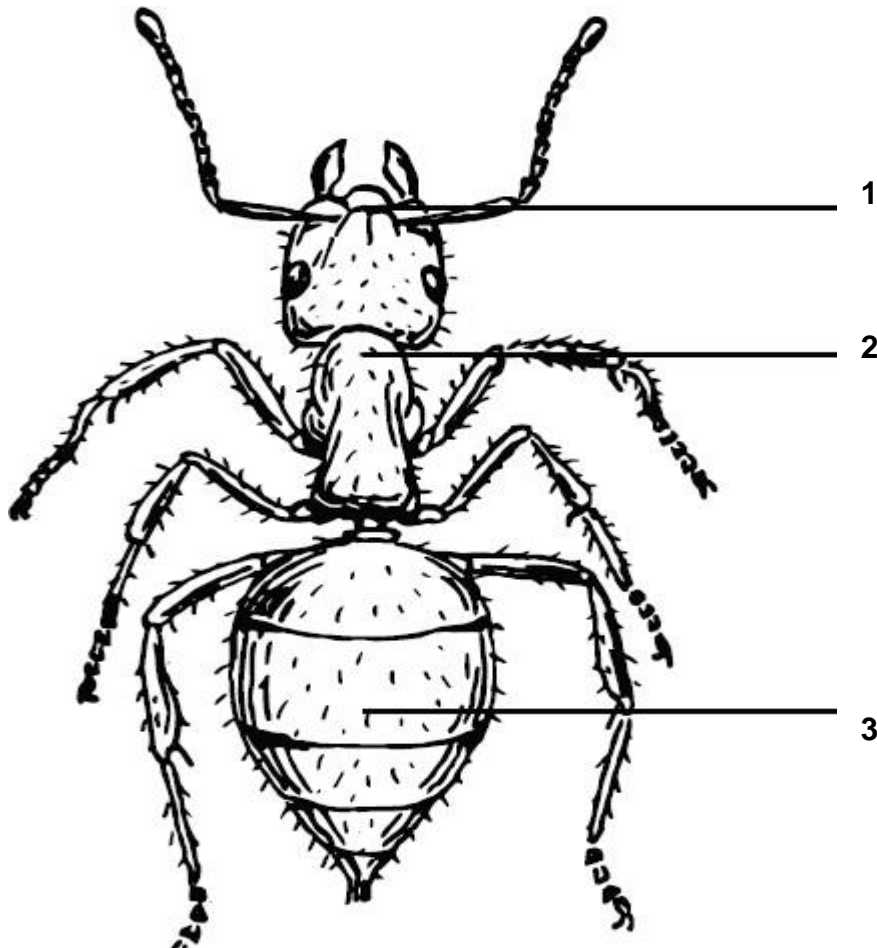
4.2. Identify the parts numbered 1,2 and 3. (3)

4.3. Which of the spheres consists of large bodies of water? Write down the name of the sphere and number on the picture. (1)

(TOTAL=5)

QUESTION 5 (Diversity of Animals)

Study the following diagram and then answer the questions that follow:



5.1.1. What is the name of the animal above? (1)

5.1.2. In which phylum does the above animal belong to? (1)

5.1.3. Is this animal a vertebrate or an invertebrate? Give a reason for your answer. (2)

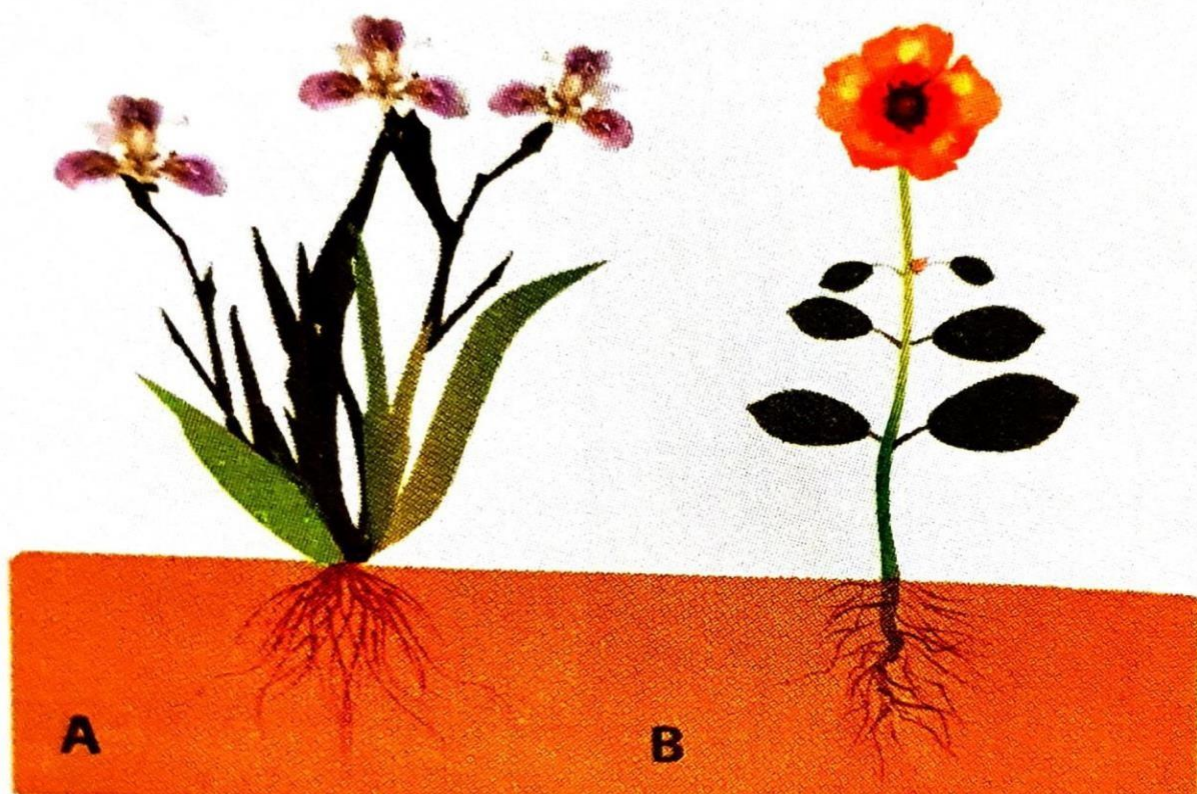
5.2. What is the difference between vertebrates and invertebrates? (2)

5.3. Name **TWO** of the five (5) main classes of vertebrates. (2)

(TOTAL=8)

QUESTION 6 (Diversity of plants)

Study the diagram below and answer the questions that follow:



6.1. Discuss the difference between angiosperms and gymnosperms. (2)

6.2. Use the diagram above compare monocotyledons and dicotyledons. Write down the comparisons in the table below.

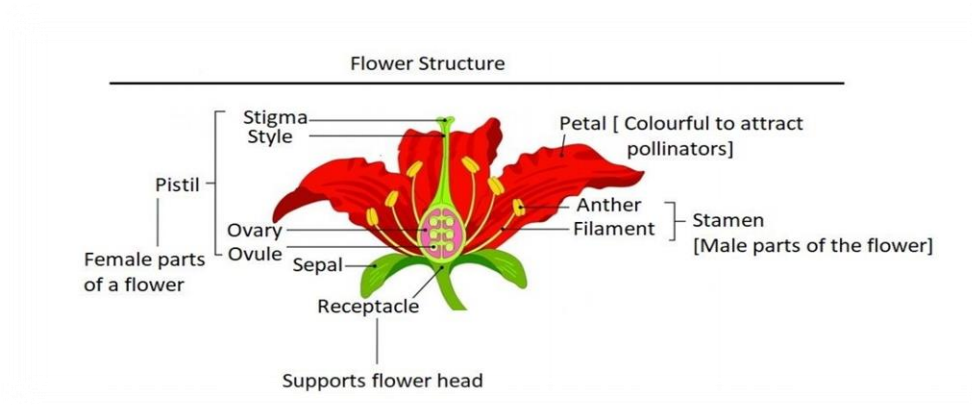
	monocotyledons	dicotyledons
leaves		
Root system		
Flowers		

(6)

(TOTAL=8)

QUESTION 7 (Sexual reproduction in angiosperms)

Study the diagram below and answer the questions that follow:

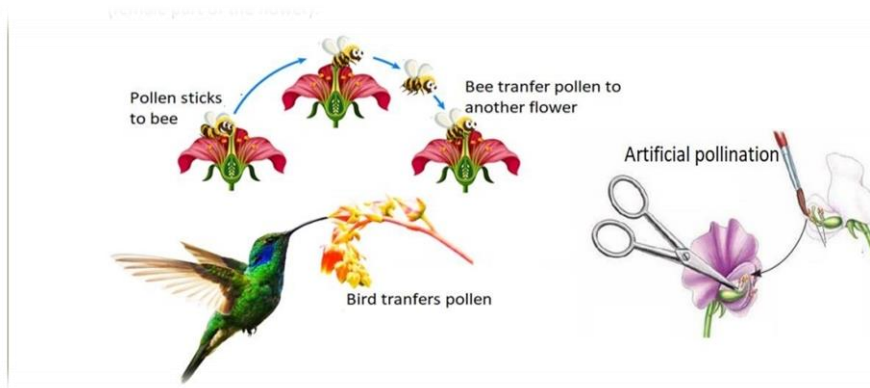


7.1.1. What is a stamen in a flower? Provide its function.

(4)

7.1.2. What is the significance of the pistil in the sexual reproduction process of angiosperms? (2)

7.2. Study the diagram below and answer the questions that follow:



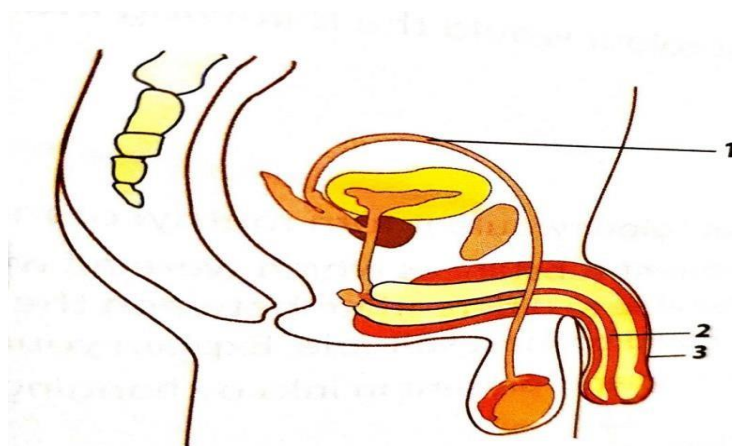
7.2.1. What is the process that is depicted in the above diagram called? (1)

7.2.2. List 3 factors/things that can assist in the above-mentioned process. (3)

(TOTAL=10)

QUESTION 8 (Human Reproduction)

Study the following diagram and answer the questions that follow:



8.1.1. Identify the type of reproductive system represented in the diagram above. (1)

8.1.2. Provide labels for the parts labeled 1 and 3. (2)

8.1.3. Explain how pregnancy can be prevented using contraceptives such as condoms. (2)

8.2. Discuss the implications of teenage pregnancy on the lives of young girls and ways to prevent it or reduce its occurrence in schools. (4)

(TOTAL=9)

GRAND TOTAL: 60 MARKS